

## INSTALLATION INSTRUCTIONS

DESCRIPTION: Front Number Plate Kit

PART NUMBER: B2G-F16L0-V0

MODEL: '18 ~ XSR700



### ⚠ WARNING

Please read and understand these instructions completely before installation to avoid possible injury, or damage to the accessory or vehicle.

### NOTICE:

This installation requires a torque wrench and should be performed by an authorized Yamaha dealer or other qualified technician.

### WARRANTY INFORMATION:

In the United States, see your authorized Yamaha dealer for a copy of the Yamaha Genuine Parts and Accessories Limited Warranty.

### DEALER OR INSTALLER:

These instructions contain important information for future reference and must be given to the customer.

### PARTS LIST:

No.	Part Number	Description	Qty.
--	B2G-F16L0-V0	Front Number Plate Kit	--
①	*	Bracket	2
②	*	M6 Hex Socket Bolt	(6) Not Used
③	*	Well Nut	4
④	*	Washer	4
⑤	*	Number Plate	1
⑥	*	Screw	4
⑦	*	M6x50mm Hex Socket Bolt	4

\*Part supplied with kit only and not available separately.

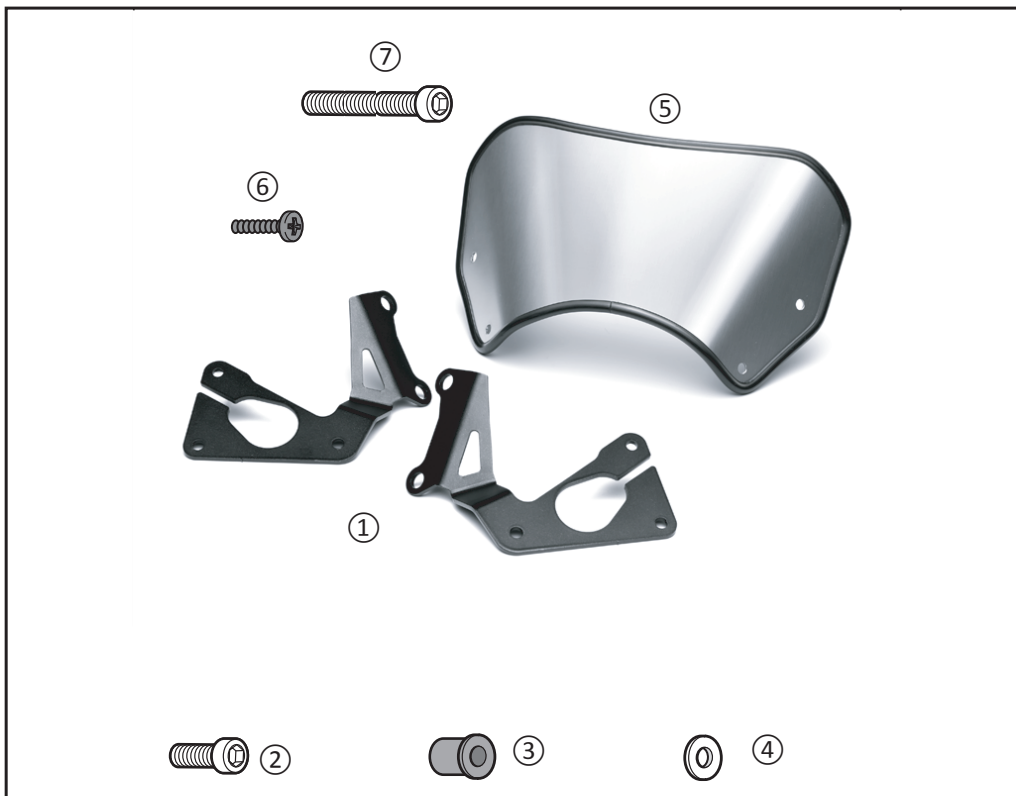


Fig. 1

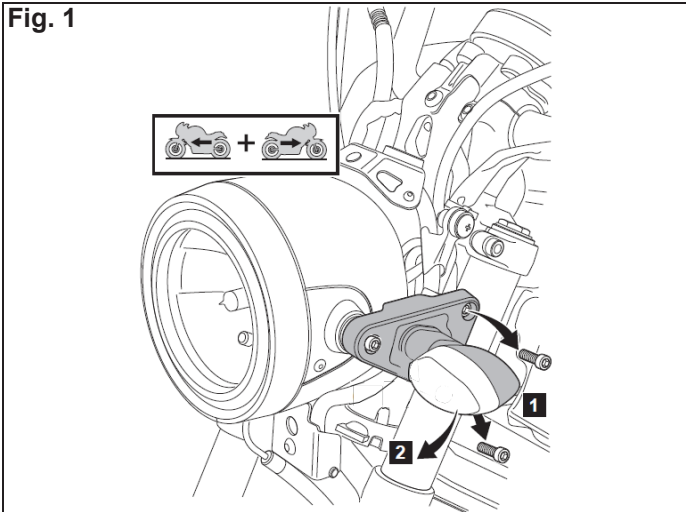


Fig. 2

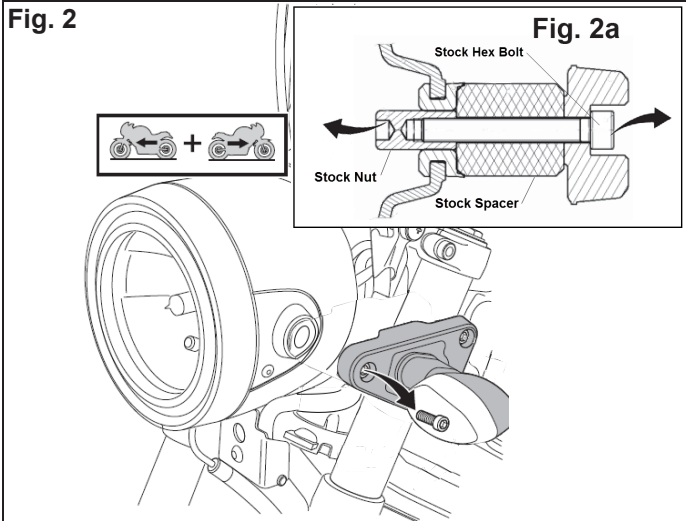
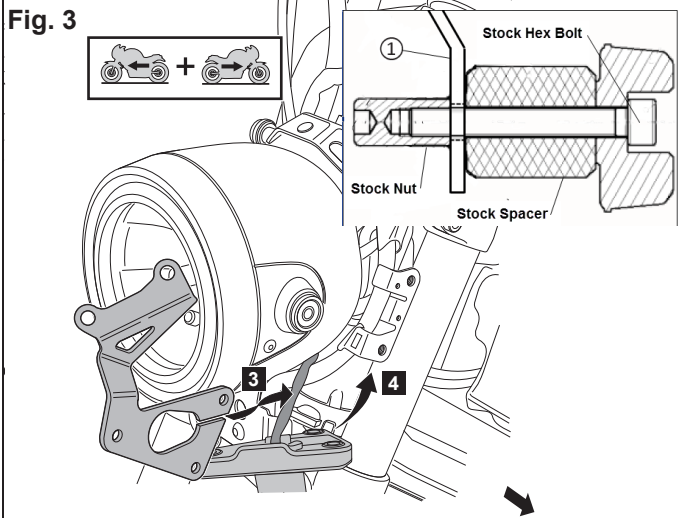


Fig. 3



**PREPARATION:**

- Stand motorcycle on a secure and level surface.
- Clean all mount surfaces before installation.

**INSTALLATION:**

- 1** Remove 2 stock hex head socket bolts as shown in Fig. 1. Retain stock spacers for reuse.
- 2** Pull the stock turn signal mount away from the headlight bucket as shown in FIG.1. Retain the turn signals and mount plate for reuse.

Remove the stock nut on the inside of the turn signal mount as shown in Fig. 2a. **Note:** If you remove this bolt with the turn signal mount on the bike, the nut can fall into the headlight bucket. Retain stock spacer for reuse.

- 3** Install the Brackets **1** as shown in FIG. 3. Pass the turn signal leads through the open slot in the bracket.
- 4** Install the stock hex bolt, stock spacer, and stock nut removed in step 2. Torque to 7Nm (5.2 ft-lbf).
- 5** Install 2 M6 x 50mm Hex Socket Bolts **7** to secure the headlight stay/turn signal assembly and Bracket. See Fig. 4. Torque these bolts to 7 Nm (5.2 ft-lbf). Repeat for other side.
- 6** Install 4 Well Nuts **3** into the mount holes in the Bracket **1** as shown in FIG. 4.
- 7** Install the Number Plate **5** to the Brackets **1** with 4 Screws **6** and 4 washers **4** as shown in FIG. 5. Torque the screws to .6N-m (5.0 in-lb)

**MAINTENANCE:**

Periodically, check torque on all hardware. If loose hardware is found, re-torque to specification.

**CARE AND CLEANING:**

Clean painted metal parts with a clean soft cloth and mild soap and water. Rinse and dry. Clean the number plate with a clean soft cloth and mild soap and water solution. Rinse and dry with a clean soft cloth

**CUSTOMER SERVICE:**

For further information see your Yamaha dealer.

**ESTIMATED TIME TO INSTALL: 1.0 HRS**

Fig. 4

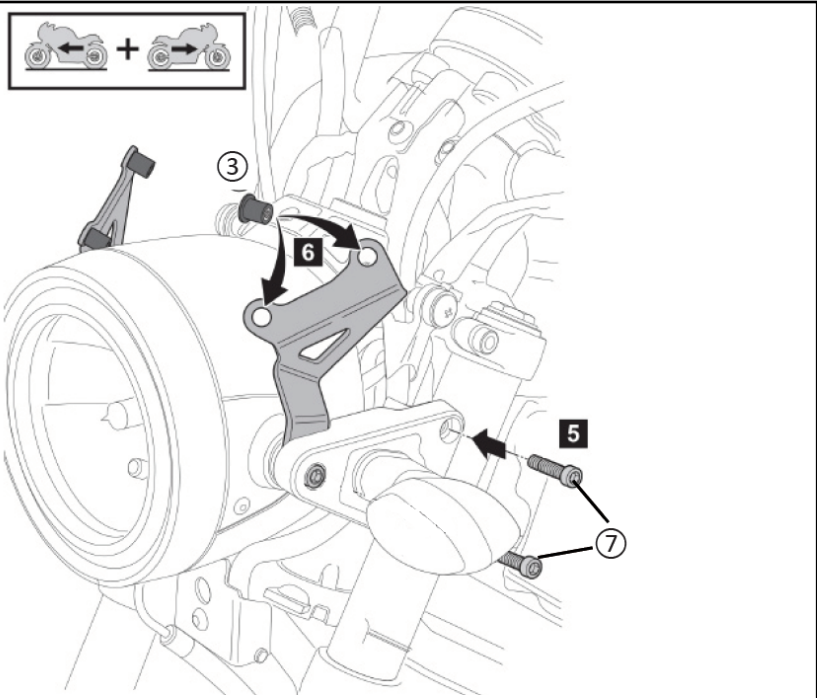


Fig. 5

